

PRESENTERS



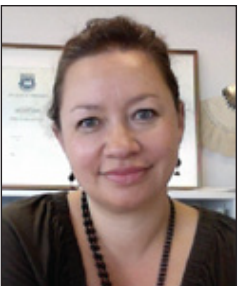
Robert Bowe, Principal Solicitor, Ministry of Social Development, Wellington

Practising in England and then New Zealand since 1974 Robert has worked extensively in the family law area. He joined Child, Youth and Family in 2003. As Principal Solicitor in the Office of the Chief Legal Advisor Robert's focus is CYF litigation.



Dr Allan Cooke, Barrister, Auckland

Allan is a practitioner who has a particular interest in proceedings under the CYPF Act, and within that, a specific focus on issues related to the permanent placement of children who are in care, including the provision of support of those children and their caregivers. He is the Chair of the NZLS Family Law Section. Allan received his doctorate in August 2014 for his thesis *State Responsibility for Children in Care*.



Hana Ellis, Barrister & Mediator, Auckland

Hana (Ngā Puhī/Ngāti Porou) is a barrister and mediator practising family law. She has a background in criminal and mental health law and is currently on the Intellectual Disability (Compulsory Care and Rehabilitation) Act 2003 roster and is an FDR provider. Hana has been on the Lawyer for Child list since 1999.

The statements and conclusions contained in this booklet are those of the author(s) only and not those of the New Zealand Law Society. This booklet has been prepared for the purpose of a Continuing Legal Education course. It is not intended to be a comprehensive statement of the law or practice, and should not be relied upon as such. If advice on the law is required, it should be sought on a formal, professional basis.

Cover and text stocks used in this publication are from Forestry Stewardship Council certified mills, manufactured under the environmentally responsible paper manufactured environmental management system ISO 14001, using pulp from well managed forests and other controlled sources.

CONTENTS

1. VULNERABLE CHILDREN – LAW AND POLICY	1
LEGISLATIVE CHANGES ALREADY IN FORCE	1
<i>Vulnerable Children Act 2014</i>	1
<i>Children, Young Persons and Their Families (Vulnerable Children) Amendment Act 2014</i>	1
LEGISLATIVE CHANGES FROM 1 JULY 2016	1
<i>Supporting policy</i>	1
SUBSEQUENT CHILDREN	2
<i>What will happen</i>	3
REQUIREMENTS FOR FAMILY GROUP CONFERENCES, REPORTS AND PLANS	3
<i>Family Group Conferences</i>	3
<i>Social work reports</i>	4
<i>Review reports</i>	5
<i>Plans</i>	5
<i>What will happen</i>	6
PERMANENT CAREGIVERS AND SPECIAL GUARDIANS.....	6
<i>Permanent caregivers</i>	6
<i>Special guardians</i>	7
<i>Effect of a special guardianship order</i>	7
<i>What will happen</i>	7
IMPLICATIONS FOR THE PERMANENT CARE AND HOME FOR LIFE POLICY	9
<i>Home for Life - Definition</i>	9
<i>Home for Life caregiver - Definition</i>	9
<i>Financial and other assistance for permanent caregivers</i>	10
<i>What will happen</i>	10
MOVING FROM CARE TO INDEPENDENCE.....	12
<i>What will happen</i>	12
OTHER FINANCIAL ASSISTANCE	13
IMPLICATIONS FOR SERVICES AND SUPPORT ORDERS	13
<i>Services orders</i>	13
<i>Support orders</i>	13
<i>What will happen</i>	13
WHO TO CONTACT	14
APPENDIX 1.....	15
2. VULNERABLE CHILDREN.....	17
IDENTIFICATION OF VULNERABLE CHILDREN	17
THE AMENDING LEGISLATION	19
DEFINITIONS – AMENDMENTS TO SECTION 2 CYPFA	19
PRINCIPLES: AMENDMENTS TO SECTIONS 5 AND 13	20
SUBSEQUENT CHILDREN	22
<i>Who is a subsequent child/who is a parent of a subsequent child?</i>	22
<i>Assessment of the parent of a subsequent child</i>	26
<i>Decision made that child is likely to suffer harm</i>	27
<i>Decision made unlikely to suffer harm</i>	27
<i>Application for confirmation of decision not to apply for declaration under s67</i>	28
<i>Court declining to confirm decision</i>	30
<i>Practical implications?</i>	30
SPECIAL GUARDIANSHIP	31
<i>Effect of special guardianship order</i>	31
<i>Enforceability</i>	32
<i>Timing of orders and thresholds for appointment</i>	33
<i>Applications when under the CYPFA regime</i>	33
<i>Child Subject to COCA orders</i>	35
PERMANENT CAREGIVERS AND SUPPORT.....	37
<i>The new paradigm</i>	40
DEFINITION OF A PERMANENT CAREGIVER.....	42
<i>The continuing duty to provide support - Section 388A</i>	44

<i>Section 388A(2)</i>	44
<i>Review of decision not to assist</i>	46
FAMILY GROUP CONFERENCES.....	47
SUPPORTING YOUNG PEOPLE TO TRANSITION FROM CARE – SECTION 386A.....	49
PPPR APPLICATIONS	55
PARENTS WHO ARE MINORS	56
LEGAL AID.....	58
<i>Children’s Teams</i>	59
SUMMARY.....	60
APPENDIX 1	61
APPENDIX 2	95