

## CHAIR



### **Todd Simmonds, Lorne Street Chambers, Auckland**

Todd was admitted to the bar in 1990 and specialises in criminal litigation. He has extensive trial experience in the High and District Courts and has appeared many times as lead counsel in the Court of Appeal. Prior to becoming a barrister sole in 2004, Todd was a senior prosecutor with Meredith Connell, the office of the Auckland Crown Solicitor.

He has been a member of the Auckland Crown Solicitor's panel since 2004 and was appointed to the Manukau Crown Solicitor's panel upon its inception in 2015. Todd was appointed as senior counsel to the New Zealand Defence Force courts-martial panel in 2006 and was appointed to the Serious Fraud Office prosecution panel in 2010.

Between 2010 and 2022, he served on a variety of criminal law committees as a member, deputy chair and convenor. Between 2011 and 2018, Todd served as a member of the New Zealand Lawyers and Conveyancers Disciplinary Tribunal. He is a regular presenter on all aspects of criminal law at conferences/seminars/webinars.

## SPEAKERS



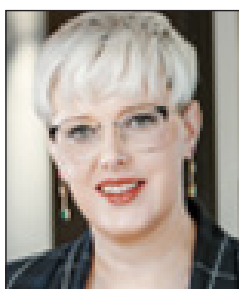
### **Vicki Ammundsen, Vicki Ammundsen Trust Law, Auckland**

Vicki is a trust practitioner. She has an appreciation of the issues that confront clients in the context of, and interaction between estate planning, residential care subsidy concerns, capacity, relationship property, family and trust related issues.



### **Donna-Maree Cross, Lorne Street Chambers, Auckland**

Maree practises in criminal and civil litigation. In addition to her LLB (Hons)/BA from the University of Auckland (graduating with a Senior Prize and Senior Scholarship respectively), she holds an LLM (graduating as a Scholar) from Columbia University, New York. Maree was full-time junior to David PH Jones KC and then Senior Associate at MinterEllisonRuddWatts before she joined the independent bar. She is Convenor of one of the Auckland Standards Committees, member of the NZLS National S30 Interview Panel, and contributing author to "Privacy Law in New Zealand" (Thomson Reuters).



### **Emma Crowley, LangtonHudsonButcher, Auckland**

Emma has a background in human resources and employment law and is able to assist with contentious and non-contentious employment related issues. Before qualifying as a practising lawyer and joining LangtonHudsonButcher she worked in HR at an Intellectual Property firm. Emma's background in HR means that her advice is practical and tailored to her clients' needs. Emma has a particular interest in ACC legislation as it relates in the employment context.

## **SPEAKERS**



### **Theresa Donnelly, Perpetual Guardian, Auckland**

Theresa graduated from the University of Auckland in 1992 and has a wealth of experience in elder law and trust and estate related matters. She was formerly at Public Trust (Senior Solicitor and Team Leader) and the Ministry of Social Development where she was lead Senior in the Public Law Team, working with Parliamentary Counsel, Older People's Policy and the Office of Senior Citizens. Theresa worked on the 2017 changes to the EPA forms. She is a regular presenter to professional groups such as ADLS, NZLS CLE, CCH, STEPS, and Legalwise, and is known for her practical approach to thorny issues.



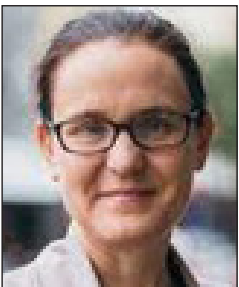
### **Riaan Geldenhuys, Barrister, Auckland**

Riaan practises as a barrister sole and advises a number of high-profile companies on income tax, GST and Customs issues. He has several clients in the property sector, including receivers, liquidators, accounting and law firms. Before joining the bar, Riaan was a tax disputes resolution specialist for PwC for more than 10 years, and worked in senior roles in Inland Revenue. Prior to immigrating from South Africa, he practised as a solicitor and was a litigation partner from 1999.



### **Usha Patel, Hobson Chambers, Auckland**

Usha is not only a very experienced family law practitioner and mediator, but she also has experience in criminal law, civil litigation and even conveyancing. An Auckland family law barrister since 1996, she developed the comprehensive materials for this course and enjoys the interactive style of presentation. In Usha's spare time, when she is not with family and friends, she writes for Thomson Reuters on child law and procedure.



### **Christina Sheard, Dentons Kensington Swan, Auckland**

Christina is a resource management specialist with over 20 years' experience in leading law firms in Auckland and London. She advises industrial, commercial, residential and government clients on all aspects of the Resource Management Act and associated legislation

# CONTENTS

<b>PRACTICAL TRUST ADMINISTRATION .....</b>	<b>1</b>
TRUST ADMINISTRATION .....	3
TRUSTEE SERVICES .....	4
TRUSTEE DUTIES .....	4
DISCLOSURE .....	7
TRUSTEE LIABILITY FROM THE PERSPECTIVE OF A LAWYER PROVIDING TRUSTEE SERVICES .....	8
CORPORATE TRUSTEES.....	8
MULTIPLE APPOINTMENTS .....	9
SPECIAL PURPOSE CORPORATE TRUSTEES .....	9
LIABILITY CONSIDERATIONS .....	10
THE TRUST’S BENEFICIARIES AND CORPORATE TRUSTEES.....	14
EXERCISE OF DISCRETION .....	16
PRACTICAL CONSIDERATIONS .....	21
DECISION-MAKING BY CORPORATE TRUSTEES .....	23
REASONS FOR DECISIONS .....	23
CONCLUSION.....	24
<b>OVERVIEW OF THE NATURAL AND BUILT ENVIRONMENT ACT AND SPATIAL PLANNING ACT.....</b>	<b>25</b>
INTRODUCTION .....	27
PRIMARY REFORM OBJECTIVES .....	28
TWO ACTS WORKING TOGETHER.....	28
REGIONAL SPATIAL STRATEGIES – A ROADMAP FOR EACH REGION .....	29
THE “ENGINE ROOM” OF THE NBE BILL.....	30
TE TIRITI O WAITANGI – OBLIGATIONS STRENGTHENED .....	31
NATIONAL PLANNING FRAMEWORK .....	31
NBE PLANS – THE MEGA PLAN APPROACH.....	32
RESOURCE CONSENTS AND DESIGNATIONS .....	33
NEW CONSENTING PATHWAYS .....	34
ALLOCATION OF RESOURCES.....	34
EXISTING USES.....	35
CONTAMINATED SITES .....	35
ENFORCEMENT.....	35
WHERE TO FROM HERE?.....	36
<b>EMPLOYMENT LAW UPDATE .....</b>	<b>37</b>
INTRODUCTION .....	39
RECENT LEGISLATIVE CHANGES.....	39
UPCOMING OR POTENTIAL LEGISLATIVE CHANGES.....	45
CASE LAW UPDATE.....	47
<b>NAVIGATING COMPLEX FAMILY ISSUES.....</b>	<b>55</b>
AGREEMENTS UNDER THE PROPERTY (RELATIONSHIPS) ACT 1976 (PRA) .....	57
FORMAL REQUIREMENTS – S 21F .....	58
SERIOUS INJUSTICE – S 21J.....	59
AGAINST THIS BACKGROUND, WHAT ADVICE SHOULD THE LAWYER HEED?.....	61
PRA AND THE DEATH OF A SPOUSE .....	61
WILLS AND FAMILY PROTECTION ACT 1955 (FPA).....	62
TRUSTS AND ESTATES .....	63
THE AGREEMENT/WILL .....	67
WHAT TO DO WHEN THINGS GO WRONG? .....	71
<b>CRIMINAL LAW: DEMENTIA AND COGNITIVE IMPAIRMENTS IN OUR COURTS .....</b>	<b>73</b>
INTRODUCTION .....	75
TACKLING THE CRIMINAL PROCESS WITH COGNITIVE IMPAIRMENT .....	76
WHAT TO LOOK FOR.....	76
STAYS OF PROCEEDINGS FOR COGNITIVE IMPAIRMENT.....	78
UNRELIABLE ADMISSIONS .....	81

COMMUNICATION ASSISTANCE .....	88
CONCLUSION.....	89
<b>TAX: A SMORGASBORD FOR GENERAL PRACTITIONERS .....</b>	<b>91</b>
PROPERTY TAX.....	93
BRIGHT-LINE TEST .....	94
DENIAL OF INTEREST DEDUCTIONS ON RESIDENTIAL PROPERTY .....	99
PURCHASE PRICE ALLOCATIONS.....	100
TRUST DISCLOSURE RULES.....	102
39% TAX RATE AVOIDANCE .....	104
TAXATION OF INFLUENCERS.....	105
MAKING THE MOST OF YOUR CRYPTO LOSSES .....	109
GST ON COURT AWARDS AND SETTLEMENTS.....	111
MANAGING TAX DEBTS .....	113
<b>EFFECTIVE ESTATE ADMINISTRATION – HOW AND WHEN CAN YOU RESORT TO OUT-OF-THE-BOX STRATEGIES? .....</b>	<b>115</b>
THE MINEFIELD OF ESTATE ADMINISTRATION .....	117
SURPRISE, YOU ARE AN EXECUTOR! .....	117
THE VALUE OF THE INDEPENDENT.....	119
EARLY OBLIGATIONS ON EXECUTORS <i>#BEWARELOOSELIPSSINKSHIPS</i> .....	120
SEPARATION VS DISSOLUTION.....	120
DECLARATION OF FAMILY HISTORY .....	123
FURTHER PROTECTION – S 9 SEARCH.....	124
CERTAINTY OF ESTATE.....	124
ESTATES ADMINISTRATION BASICS .....	125
POTENTIAL ISSUES .....	126
METHODOLOGY .....	129
PREVENTION? .....	130
THE FUNERAL.....	131
INTESTACY.....	132
SEARCH FOR A WILL.....	132
ADMINISTRATOR.....	133
SEPARATION .....	134
MINORS.....	134
DOCUMENTS .....	135
WHO IS ENTITLED TO TAKE ON INTESTACY?.....	135
SUCCESSION TRUSTS .....	136
OBLIGATIONS TO ADVISE .....	137
EXECUTOR/ADMINISTRATOR OBLIGATIONS.....	138
PROFESSIONAL FEES.....	140
UNDERSTANDING THE WILL & OBLIGATIONS .....	140
ADJUSTING THE WILL AFTER THE FACT .....	140
DEED OF FAMILY ARRANGEMENT.....	141
PRACTICAL ADVICE ON ADMINISTRATION .....	141
STATUTORY TIMEFRAMES & DISTRIBUTIONS .....	144
AND THE GOLDEN RULES.....	145
APPENDIX A – RENUNCIATION OF PROBATE .....	146
APPENDIX B – LETTERS OF ADMINISTRATION/INTESTACY CHECKLIST .....	147
APPENDIX C – SAMPLE CONSENT .....	149
APPENDIX D – DECLARATION OF FAMILY HISTORY.....	150
APPENDIX E – SECTION 77 ADMINISTRATION ACT 1969.....	154
APPENDIX F – RULE 27.35 HIGH COURT RULES .....	157