

HELI
LIFTING THE FUTURE

24 YEARS TOP1 FORKLIFT MANUFACTURER AND SALER
IN CHINA FOR CONSECUTIVE 24 YEARS

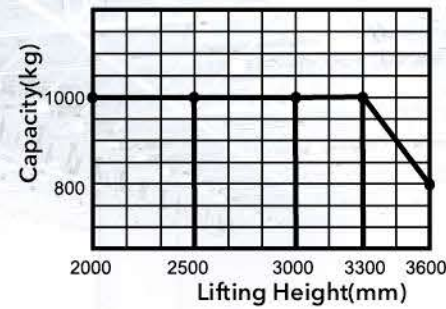
CDD10-060

1.0 Ton Electric Stacker

Lifting Height: 2000-3600mm



Load Curve



Advantages

- Mechanical Steering-Economic, comfortable, more reliable.
- AC Driving System-Low noise, quiet, without carbon brush and free maintenance.
- Electric Lifting-Rapid, efficient, electricity limit switch is Standard.
- Short Wheelbase-Small turning radius, suitable for narrow space.
- Energy conservation-Save energy, every day only 5kWh.
- AC Controller-Stepless, strong power, multiple automatic protection.
- Intelligent Control-Regenerative braking, automatic energy recovery.

Fork over

AC drive

Electric height limiter

Integrated fork, more stronger

Type	Lift height (mm)	Mast type	Outside width between forks (mm)	Inside width between forks (mm)
CDD10-060	2000/2500/3000/3300/3600	Standard 2-STAGE	550/600/650/685	180/230/280/315

HELI CDD10-060

Feature		
Model		CDD10
Configuration No.		060
Type		Narrow legs
Mast type		Standard 2-Stage
Load capacity	kg	1000
Load center	mm	600
Wheel base	mm	1285
Operating type		Walkie
Wheels		
Wheels type		PU
Wheel quantity Driving wheel/Balance wheel/Bearing wheel		1/1/4
Dimension		
Standard lift height	mm	2000/2500/3000/3300/3600
Lowered fork height	mm	90
Fork size(length/width/thickness)	mm	1150(1220)/185/55
Overall length	mm	1898
Overall width	mm	806
Max.extend height	mm	2385/2885/3385/3685/3985
Mast lowered height	mm	1550/1800/2050/2200/2350
Min.Turning radius	mm	1475
Min.Aisle width for pallets 800×1200	mm	2045
Min.Aisle width for pallets 1000×1200	mm	2084
Min.ground clearance	mm	30
Performance		
Travel speed,laden/unladed	km/h	3.5/4
Lift speed,laden/unladed	mm/s	130/230
Lowering speed,laden/unladed	mm/s	130/230
Gradeability,laden/unladed	%	5/7
Electrical configuration		
Drive motor/Lift motor	kW	AC0.95/DC2.0
Battery voltage	V	24
Battery capacity	Ah	210
Brake		Electromagnetic/Regenerative
Controller		CURTIS
Weight		
Battery weight	kg	202
Service weight with battery	kg	1010

* Details of specifications and equipment are based on information available at time of printing and may change without notice.



CENTRAL GROUP
FORKLIFTS & TRUCKS
Phone : 0800 538 735 Web : www.centralgroup.co.nz