



### Method



Check radial artery position



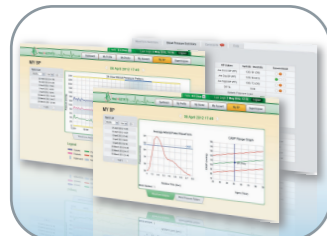
Put on BPro<sup>®</sup> G2



Calibrate & measure



Send data via mobile



View ABPM reports online

General	
Model	T6200 series
Display	Colour LCD, 1.45 in, 128 x 128 resolution
Power source	PD2450, 3.7V, 200 mAh Li-Ion rechargeable coin-cell battery
Battery life	3 days to 2 months depending on usage
Buttons	<ul style="list-style-type: none"> <li>• Mode</li> <li>• Up</li> <li>• Down</li> <li>• Panic</li> </ul>
Display	
BP session mode	<ul style="list-style-type: none"> <li>• Systolic pressure in mmHg</li> <li>• Diastolic pressure in mmHg</li> <li>• Blood pressure waveform</li> </ul>
Data process	<ul style="list-style-type: none"> <li>• Data selection for sending</li> <li>• Data selection for deletion</li> </ul>
Device configuration	<ul style="list-style-type: none"> <li>• Pairing and unpairing with phone</li> <li>• Pairing and unpairing with MC3100™</li> <li>• Default device selection</li> </ul>
Setup	Configure time
PWA mode	Blood pressure waveform
Memory (24-hour session)	5 sessions of 96 blocks of waveform
Blood Pressure Measurement	
Measurement method	Modified applanation tonometry
Measurement site	Radial artery at the wrist (left or right)
Calibration method	Oscillometric, performed before use
Measurement time (24-hour session)	10 seconds per block of waveform
Blood pressure range	30 to 280 mmHg
Pulse rate range	30 to 180 beats/minute
Bluetooth Connectivity	
Specification	Full Bluetooth v2.1 enhanced data rate (EDR)
Profile stack	Serial Port Profile (SPP)
Dimension and Weight	
Watch head	45 [W] x 55 [L] x 16 [H] mm
Sensor housing	32 [W] x 38 [L] x 18 [H] mm
Weight	Approximately 60 grams with coin-cell battery
Others	
Operating conditions*	<ul style="list-style-type: none"> <li>• 10 to 40° C</li> <li>• 15% to 90% relative humidity (non-condensing)</li> <li>• 80 to 106 kPa atmospheric pressure</li> </ul>

**Note:** The above specifications are subject to change without notice.

\*The BPro<sup>®</sup> G2 ambulatory blood pressure monitor may not meet its accuracy specifications if stored or operated outside the specified temperature and humidity ranges.

# BPro<sup>®</sup> G2

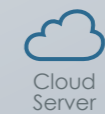
Bluetooth enabled



Wireless Enabled



Mobile Access



Cloud Server

## Your Mobile Health Solution

"Empowered by BPro<sup>®</sup>"

### HealthSTATS International

6 New Industrial Road #04-01/02  
Hoe Huat Industrial Building  
Singapore 536199  
Phone : +65 6858 2190  
          : +65 6858 6190  
Fax : +65 6858 0148  
www.healthstats.com

© 2012 HealthSTATS International. All rights reserved.  
BPro is registered trademarks of HealthSTATS International in Singapore and other jurisdictions.

## BPro® G2

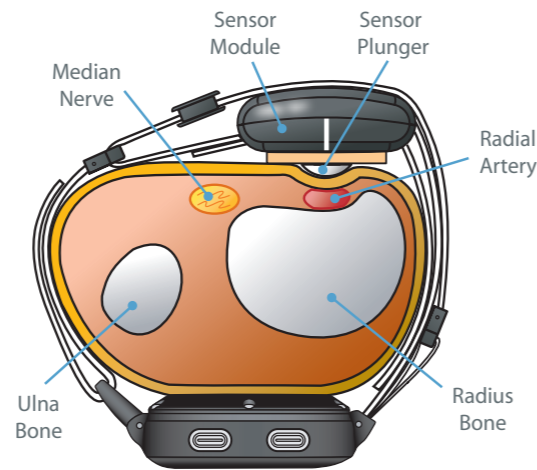
The BPro® G2 is capable of capturing Blood Pressure (BP) over 24 hours via the wrist. It is convenient to use, light weight, non disruptive, cuffless, and takes a BP reading every 15 minutes over 24 hours.



BPro® G2 watch-like device

## Strap Features

The proprietary strap system is designed to provide a constant force of applanation on the radial artery and to capture the radial waveforms faithfully.



Cross-section of wrist with BPro® G2

## Mobile Health Solution

Mobile Health Solution is an integrated healthcare service system by HealthSTATS International, providing patients and healthcare providers with mobile access to Blood Pressure (BP) monitoring for 24 hours.

It provides caregivers with remote access to patients' readings, encourages treatment compliance, and improves long term outcomes.

## Blood Pressure Monitoring

The parameters being monitored are:

1. Systolic and Diastolic Blood Pressure
2. Heart rate
3. Central Aortic Systolic Pressure (CASP)
4. 24-hour Blood Pressure patterns

Patients will be closely monitored remotely and immediate action can be taken when abnormality is detected on the data. Patients are also able to view and track their health conditions via the web portal.



The virtual ABPM mobile health solution

## Integrated Healthcare Service

### Users

Patients wear BPro® G2 to capture their BP values over 24 hours and transmits data via smartphones. The data will then be transmitted to the Cloud. From the web portal, patients can access and view their BP patterns, doctor's comments, analyse waveforms and print their health summary reports.

### Healthcare Service Providers

Using web portal access, healthcare service providers are able to monitor patient BP readings for 24 hours daily so that immediate assistance can be rendered when required.

### Doctors

Doctors are also able to access patient data via the portal to provide diagnosis and timely recommendations.

## Key Advantages

### Users Advantages

- **Daily comprehensive report**, tracking 24-hour BP patterns, waveform analysis and CASP readings
- **Traffic Light Indicator** for convenient hypertension assessment
- Continuous monitoring promotes **better control and management** of blood pressure
- **Panic Button** triggers emergency alert directly to healthcare service providers or hospitals

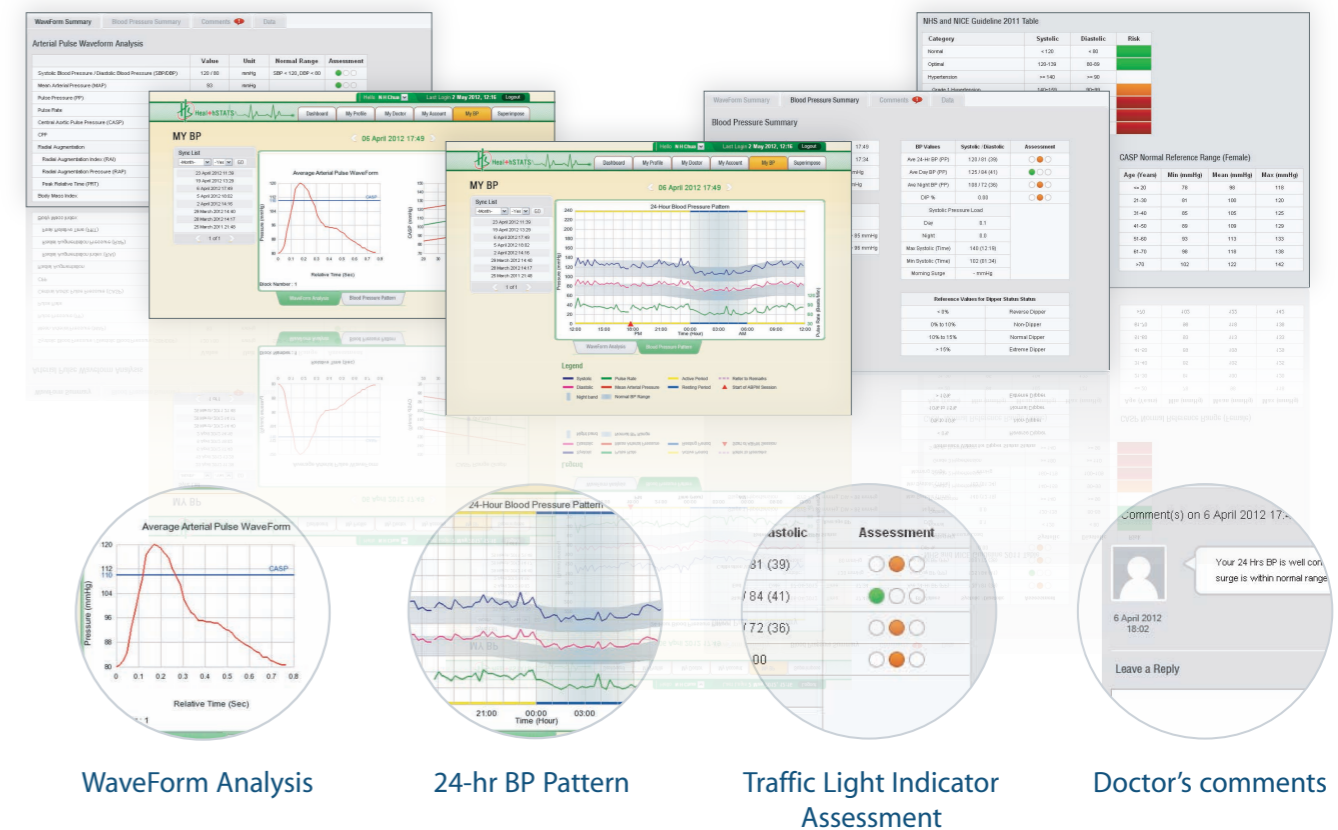
### Clinical Advantages

- Complete **diagnosis of hypertensive** patients
- Allows for collection of **clinically relevant** patient BP data
- **Better control and management** of patient BP data
- **Faster and more effective** way to assess patient BP conditions



Panic Button

## BPro® Online



WaveForm Analysis

24-hr BP Pattern

Traffic Light Indicator Assessment

Doctor's comments

BPro® G2 web portal ABPM reports