

ADAPTIC™

NON-ADHERING DRESSING

**Protects the wound,
minimizes pain and
maceration**

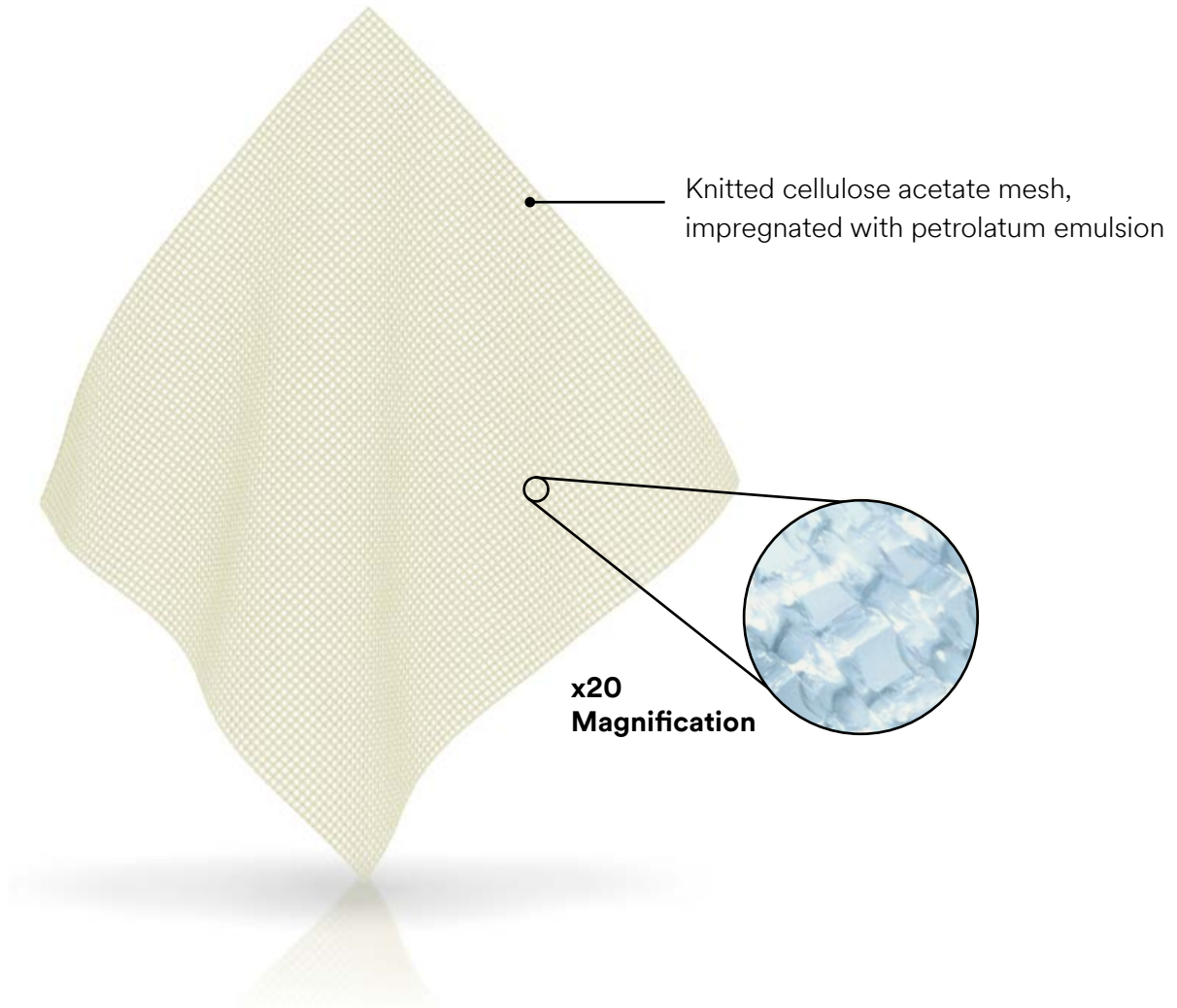


3M + **KCI™**

What is it?

ADAPTIC™ Non-Adhering Dressing is a primary wound contact dressing designed to minimize wound adherence. It consists of a knitted cellulose acetate mesh impregnated with a specially formulated petrolatum emulsion.

How does it work?

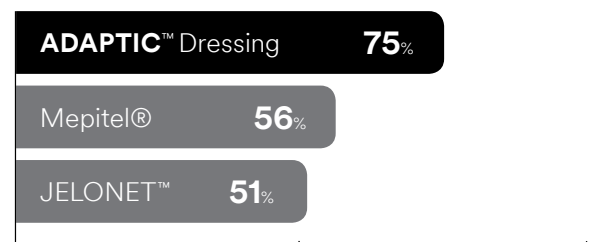


Protects the wound, minimizes pain

Adherence of the dressing to the wound has been identified as the most important factor contributing to pain at dressing change¹.

The unique mesh of ADAPTIC™ Dressing helps protect regenerating tissue by minimizing wound trauma at dressing change².

An RCT comparing three non-adherent dressings ADAPTIC™ Dressing (n=35), Mepitel® (n=37) and a non-medicated tulle gras (n=36) involving 99 patients with hand surgery wounds showed².

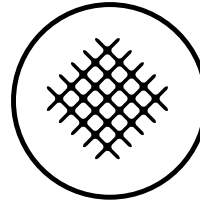


% Patients reporting pain free removal

Reduces the risk of maceration and adherence

The pore sizes of ADAPTIC™ Dressing mesh:

- Allows easy passage of exudate to the secondary absorbent dressing, thus minimizing the risk of pooling and maceration at the wound site
- Reduces the risk of tissue adherence to both ADAPTIC™ Dressing and the secondary dressing²



The pore size is designed to minimize the pooling of fluid at the wound site and allows the free passage of exudate through the dressing².

Clinical data

An RCT comparing three non-adherent dressings– ADAPTIC™ Dressing (n=35), Mepitel® (n=37) and a non-medicated tulle gras (n=36)– involving 99 patients confirms²:

- ADAPTIC™ Dressing protects regenerating tissue
- Patient pain and trauma is minimized during dressing changes



75%

of patients experienced no pain at dressing change



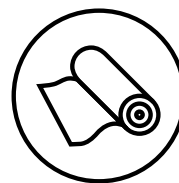
88%

of patients found ADAPTIC™ Dressing very easy to remove

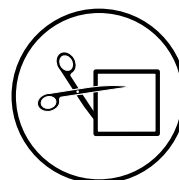
When to use it

ADAPTIC™ Dressing is indicated for dry to highly exuding wounds where adherence of dressing and exudate is to be prevented including:

- 1st and 2nd degree burns
- Lacerations and abrasions
- Grafts
- Venous ulcers
- Pressure injuries
- Nail extractions
- Eczema
- Staples and suture lines
- Surgical incisions and reconstructive procedures



ADAPTIC™ Dressing can be used with compression therapy³.



ADAPTIC™ Dressing can be cut to the size of the wound without unravelling and shredding.

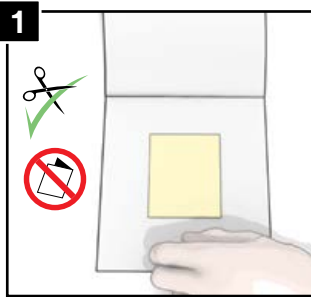
User guide

Before application

Refer to the instructions for use.

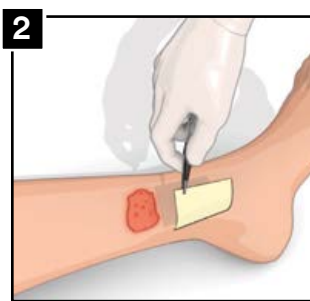
Select a size of ADAPTIC™ Dressing that is larger than the wound. Prepare the wound according to wound management protocol. Ensure skin surrounding the wound is dry. Remove the ADAPTIC™ Dressing from the box.

Dressing preparation



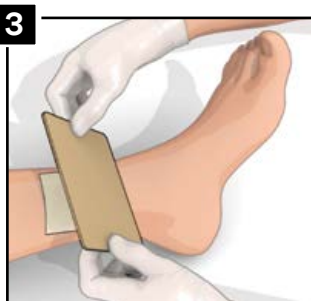
If needed **ADAPTIC™** Dressing may be cut to size with sterile scissors.

Dressing application



1. Place **ADAPTIC™** Dressing directly over the wound using surgical tongs or forceps and smooth in place around the wound.
2. If more than one piece of **ADAPTIC™** Dressing is required, ensure dressings overlap, to avoid secondary dressing adherence to the wound. Overlap should be minimized to prevent occlusion of holes.

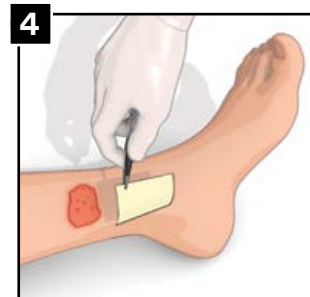
Secondary dressing application



Cover **ADAPTIC™** Dressing with a secondary dressing such as one from the **KERRAFOAM™** Dressings. Choose the secondary dressing based on the level of exudate.

Apply any secondary cover or retention/compression bandage.

Dressing change and removal



Dressing change frequency is dictated by good wound care practice and will depend on the condition of the wound. **ADAPTIC™** Dressing may be left in place for several days depending upon amount of exudate.



Item code	Size	Eaches/UOM	HCPCS code
2012	3" x 3"	50 eaches/CT 12 CT/BX	A6222
2013	3" x 8"	36 eaches/CT 6 CT/BX	A6223
2014	3" x 16"	36 eaches/CT 6 CT/BX	A6223
2015	3" x 8"	24 eaches/CT 6 CT/BX	A6223
2018	3" x 60" Roll	10 rolls/BX	A6266
2019	5" x 9" Sheet	12 eaches/CT 6 CT/BX	A6223

For more information, please contact your local representative or call **800-275-4524** or visit **myKCI.com**

NOTE: Specific indications, contraindications, warnings, precautions and safety information may exist for these products. Please consult a healthcare provider and product instructions for use prior to application. Rx only. This material is intended for healthcare professionals.

References

1. Moffatt CJ, Franks PJ, Hollinworth H. Understanding wound pain and trauma: an international perspective. *European Wound Management Association (EWMA). Position Document: Pain at Wound Dressing Changes.* 2002; 2-7.
2. Terrill PJ and Varughese G. A comparison of three primary non-adherent dressings applied to hand surgery wounds. *J Wound Care.* 2000; 9(8): 359-363.
3. Vin F, Teot L, Meaume S. The healing properties of Promogran in venous leg ulcers. *J Wound Care.* 2002; 11(9): 335-341.

©Copyright 2020 3M. All rights reserved. 3M and the other marks shown are marks and/or registered marks. Unauthorized use prohibited. LIT#AC SS • PRA-PM-US-01560 (04/20)

